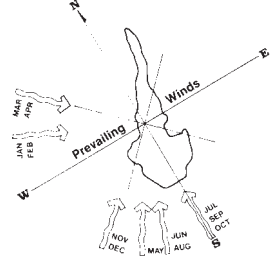


Prevailing Winds



Legend

- | | | | |
|--|--|--|--------------------------|
| | Least Restricted Boating | | Bank Fishing |
| | Somewhat Restricted Boating | | Beach |
| | Restricted Boating | | Restrooms |
| | WRPCO Fee Ownership | | Picnic |
| | Shoreline Commons Area (Approximately 100' Wide) | | Camping |
| | Walking Trail | | Sailing Center |
| | Ski-Touring Trail | | Observation Tower |
| | Improved Access Boat Launch Ramp | | Showers |
| | Unimproved Access Boat Carry-In Access Only | | In-Car Observation Point |
| | Boater Concessions | | Dam |

Index

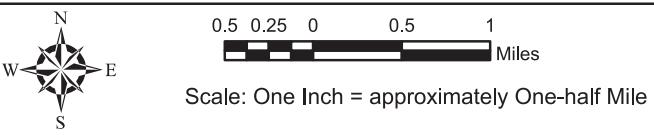
- | | |
|---|----------------------------|
| 1 Wayside Park | 9 Wood County Day Use Area |
| 2 Petenwell Powerhouse and Landing | 10 Plank Hill Ramp |
| 3 Van Kuren Landing - Beware of Shallow Water | 11 3rd Street Ramp |
| 4 Van Kuren Trail | 12 Armenia Landing |
| 5 Bighorn Access | 13 Petenwell Veterans Park |
| 6 Barnum Bay | ● Denotes Location |
| 7 Twin Lakes | |
| 8 Chester Creek | |
- Note: WRPCO does not allow any off-road vehicles on its lands except on designated access roads.**

Boater Suitability Zone Descriptions

Least Restricted
Generally suitable for power boating, sailing, water skiing and other uses that require considerable open space and water depth to maneuver and avoid conflict.

Somewhat Restricted
Suitable for most fishing boats, pontoon boats and shallow draft sailing. Not suitable for water skiing, deep-draft boats or other high-speed uses that require open space and uniformly deep water.

Restricted
Areas only suitable for canoeing and small fishing boats with shallow drafts. This area typically has shallow depths, submerged hazards and wildlife habitat considerations.



Note: The boater suitability zones are approximate and may not always represent actual boating conditions. As always, extreme caution should be exercised while recreating on the flowage.